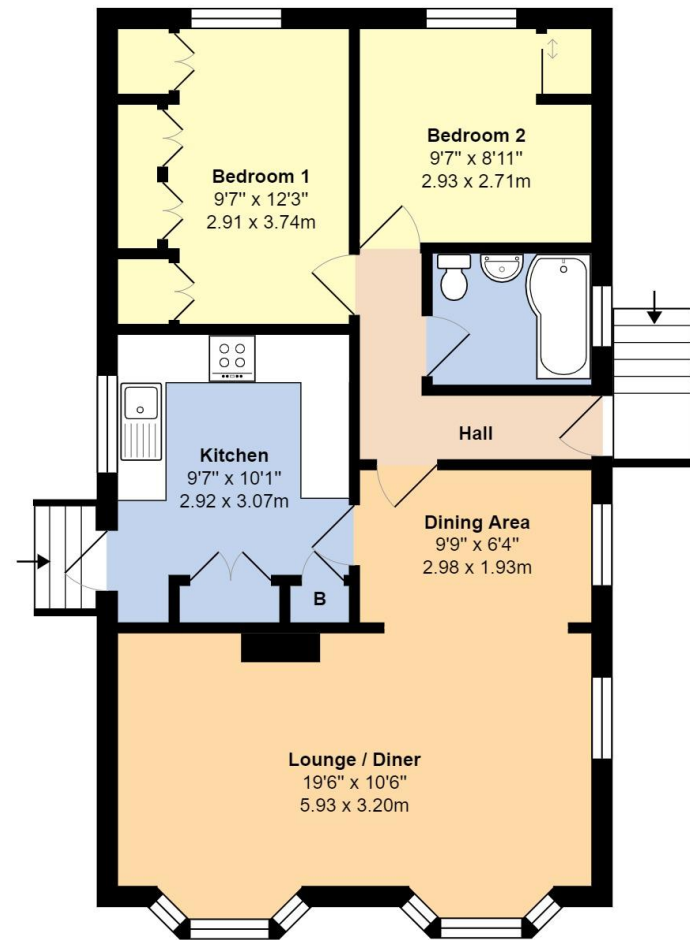


10 The Willows, Ford Road, Arundel,  
BN18 0BU  
£150,000 - Leasehold

Glyn-Jones



Total Area: 713 ft<sup>2</sup> ... 66.2 m<sup>2</sup>

Whilst every attempt has been made to ensure the accuracy of the floor plan contained here, measurements are approximate and no responsibility is taken for error, omission or mis-statement.  
This plan is for illustrative purposes only and should be used as such by any prospective purchaser.  
Created by Jtm 2022



Additional Property Information:

Maintenance: Approximately £270pcm (which includes water and sewage).  
Age Restriction: 50 Plus  
Tenure: 11 year lease remaining (approx)

We have been informed by the seller that there is an option to purchase a life long lease through the site, whereby we understand the pitch fee will increase.

We recommend you have this verified by your legal representative at your earliest convenience.

NOTE - For clarification we wish to inform prospective purchasers that we have prepared these sales particulars as a general guide. We have not carried out a detailed survey nor tested the services, appliances and specific fittings. Room sizes should not be relied upon for carpets and furnishings.



Littlehampton Office  
01903 739000  
www.glyn-jones.com



Glyn Jones and Company are delighted to offer for sale this well presented double width park home.

The accommodation comprises of an entrance hall, a spacious L-shaped Lounge/Diner, a modern fitted kitchen with a range of base and eye level units along with two built in cupboards, a refitted bathroom and two double bedrooms with fitted wardrobes.

Outside, there is surrounding decking with stunning views of fields towards Arundel and outside lighting. There is also a shed to the side with power and water with a driveway in front.

The property benefits from; gas fired central heating, a feature electric fireplace and double-glazing.

**10 The Willows, Ford Road, Arundel, BN18 0BU**  
£150,000 - Leasehold

The Willows is a full residential park home site, situated in Ford, within two miles of the historic Arundel city centre and three miles of Littlehampton town centre. Both centres offer a range of shops, banks and eateries.

Ford railway station can be found within a hundred yards of the park entrance, providing links to London Victoria, Arundel, Brighton and Littlehampton.



*Stunning views across to  
Arundel*

